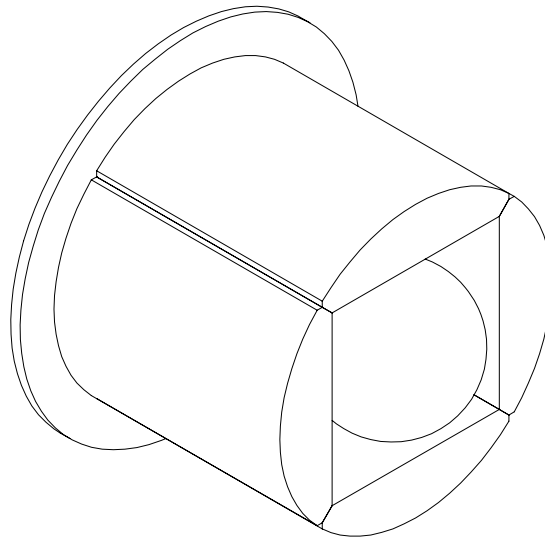


ONE DOT

INSTALLATION INSTRUCTIONS
WITH WALL PLATE



INSTALLATION OVERVIEW

PARTS + NOTES

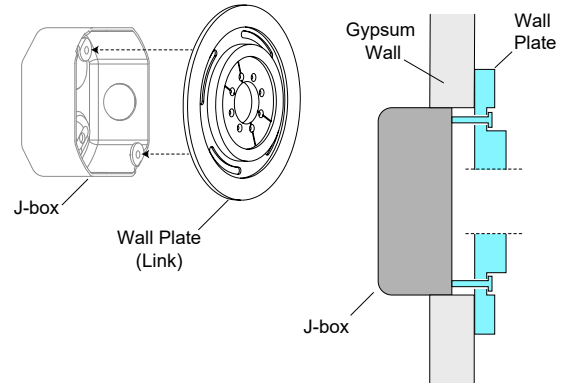
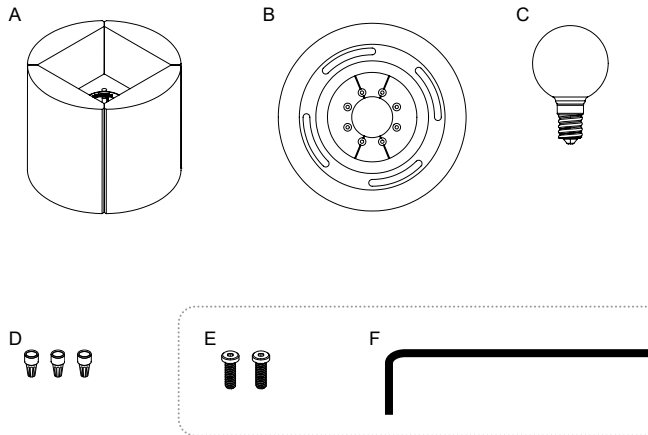
- | | | |
|---------------|---------------------------------|----------------------|
| A. Fixture | C. Tala "Sphere I" E12 LED bulb | E. Mounting Screw x2 |
| B. Wall Plate | D. Wire Nut x3 | F. 3/32" Hex Key |

CAUTION

Make sure building power is disconnected prior to handling wires. Installation should be done by a certified electrician.

NOTE:

This installation option requires an octagonal J-box. For installation without a wall plate see [One Dot without Wall Plate](#).

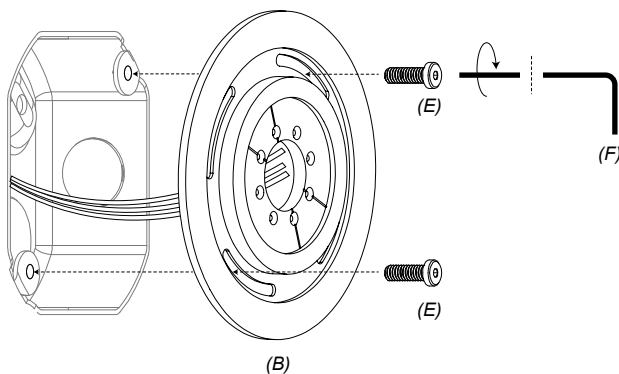


STEP 1

MOUNTING PLATE INSTALLATION

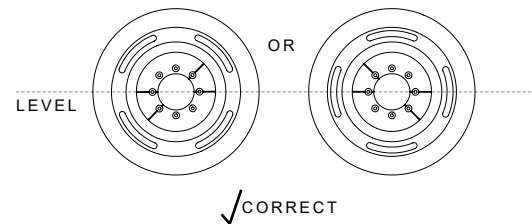
1.1 Mounting

Attach wall plate (B) to j-box using mounting screws (E) and hex key (F). Ensure alignment on wall plate (see 1.2).



1.2 Leveling

Ensure that one of the two lines on the wall plate is perfectly level before tightening screws.

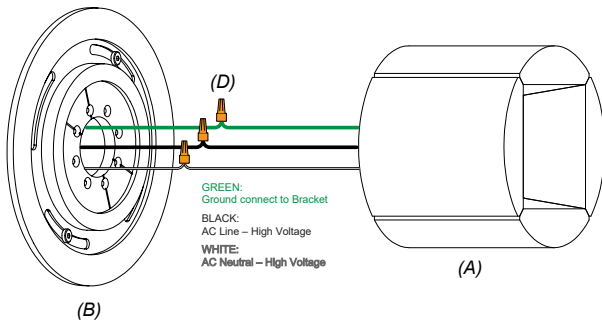


STEP 2**FIXTURE INSTALLATION****CAUTION**

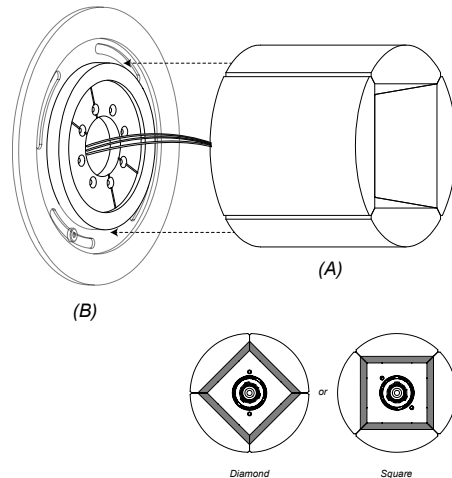
Make sure building power is disconnected prior to handling wires. Installation should be done by a certified electrician.

2.1 Connect Wires

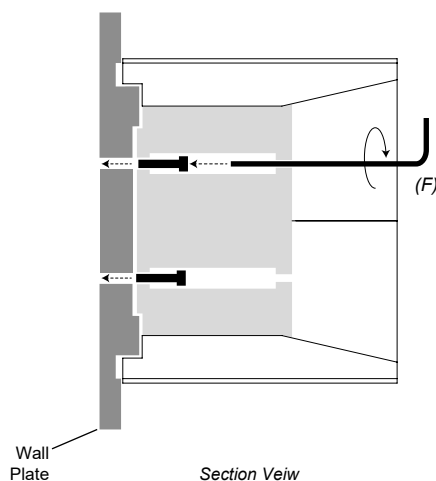
Connect white, black and green wires using wire nuts (D). Cap any extra wires in the j-box and tuck all wires through the central hole in wall plate (B).

**2.2 Place Over Mounting Plate**

Gently position the fixture (A) completely over wall plate (B), pushing any excess wire into the central hole within the plate. The fixture should be flush against the plate. Orient in a diamond or square position.

**2.3 Secure Fixture**

Carefully insert hex key (F) into small holes near bulb socket so as not to scratch metal surface of fixture. Push the invisible screw inside the fixture into alignment with the holes in the wall plate and tighten until fixture is firmly pressed against the plate.

**2.4 Install Bulb**

Screw in Tala Sphere I bulb (C) provided with fixture.

